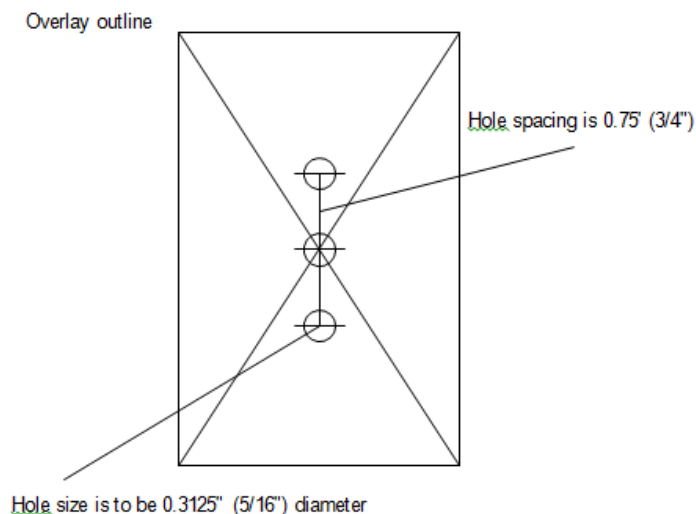


The “LP” option (also known as the “light pole” option) allows for installation in locations that require remote monitoring of the LED indicators only. The suppressor is equipped with external LEDs housed in individual NEMA

4X holders. The suppressor is mounted remote from the LEDs and then the LEDs are mounted so that they can be viewed externally. Typically, this option is used when protecting light poles. In this case, the suppressor is mounted in the base of the pole and the LEDs are mounted through the base so that they can be monitored from outside the pole. The LEDs used for this application are “daylight” bright and can be viewed in bright sunshine.



### LP Option Drilling Template



Drill one hole for each LED (one LED provided per phase of the system being protected). Typically, if the system has only one phase, the center hole will be used. If the system has two phases, the outer two holes will be used. Replace slugs for unused holes when overlay is applied.